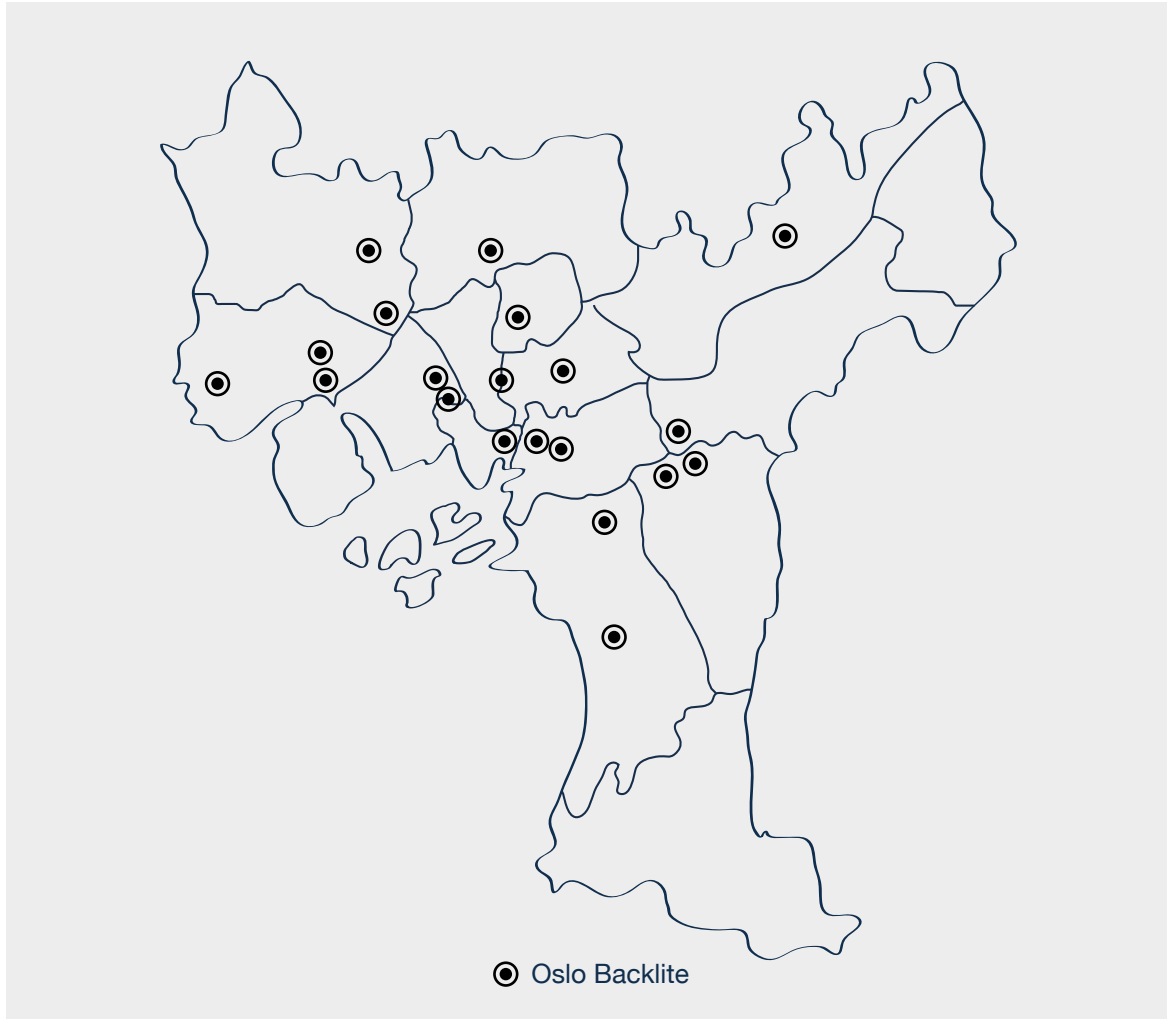


Oslo

Backlite

- large static format



Distribution

Drammensveien 157
 Rolf Wikstrømsvei 2(x2)
 Risalléen 41
 Slemdalsveien 11
 Tvetenveien 13(x2)
 Vækerøveien 70
 Østensjøveien 67
 Maridalsveien 14(x2)
 Sørkedalsveien 81(x2)
 Bergensgata 4
 Biskop Gunnerus Gate 14(x6)

Ekebergveien 233
 Åkebergveien 3(x2)
 Grønlandsleiret 28B
 Hoffsvveien 1E
 Josefines Gate 26B
 Nedre Kalbakkvei 2 C
 Trondheimsveien 158 A
 Tvetenveien 32
 Uranienborgveien 3
 Vårveien 47(x2)

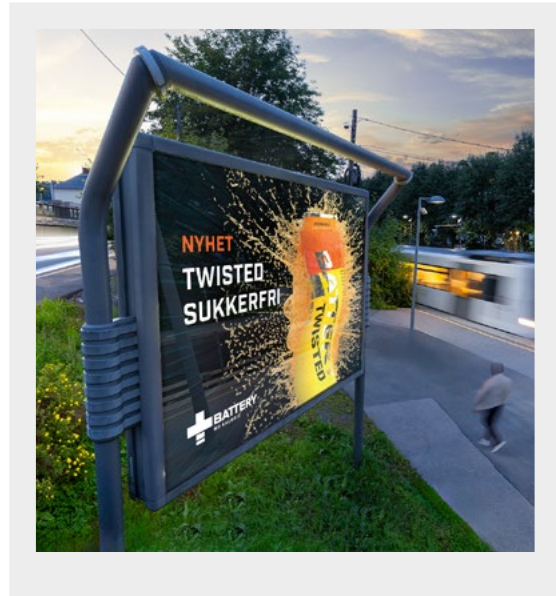
Oslo

Backlite

- large static format



Technical drawing

**Format**

3135 x 2300 mm

Visible area

3000 x 2100 mm

Material

-

Settings

Document is preferably made in 1:1 or 1:2 (adjust DPI accordingly)

Effective DPI: 100 or higher

CMYK color code

5 mm bleed

Fonts must be vectorized (saved as text contours)

Material deadline

At least 9 working days before the campaign commences.

Send files to: motiv@jcdecaux.com**Delivery notes**

The high-resolution PDF must be named

[ADVERTISER_YEAR_WEEK_PRODUCT](#)E.g: [Elkj p_Coffee_2024_w36_oslo_backlite](#)