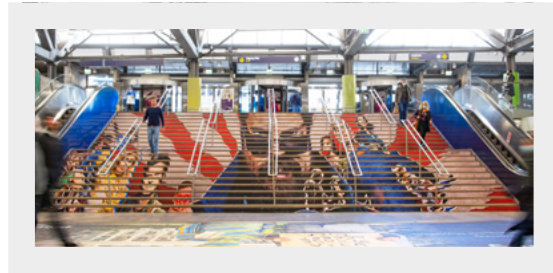
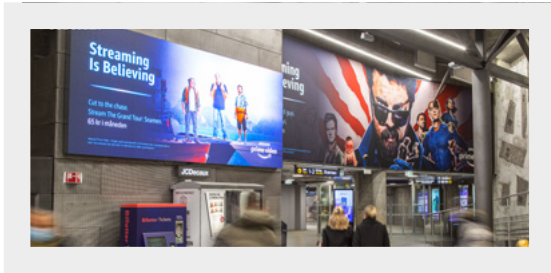


Nationaltheatret

Impact

- digital and static formats



In order to create the correct print files for Station Domination you will need the file "[tsd_rail_nationaltheatret_station_domination_indesign.zip](#)". This file contains 47 InDesign documents that represents each unique surface for the Station Domination. The 47 files are organized and linked into 5 group documents (also InDesign). The group documents are meant for reference only, and all your design should be set up in the linked documents found inside the Links folders.

Document set up

The InDesign documents are set up in scale 1:10 and are proportionally correct. In the documents you will see areas defined as safe, unsafe and offcuts (offcuts are areas which most likely will be cut off).

Safe area/white area

Keep any important information inside these areas to ensure good visibility.

Unsafe area/pink area

These are areas close to the floor or roof, or areas around/behind lights, vents and other elements that can reduce the visibility. Some parts of the unsafe areas can also be cut off when fitting the foil.

Offcuts/black area

The offcut areas will most likely be cut off and not used, although it can happen that some parts of these areas will be visible in order to properly fit the foil with the wall.

The print PDF

Document size: The final PDF print documents are preferably made in scale 1:10.

Resolution: 50 DPI or higher when scaled to life size (500 DPI in a 1:10 document size).

Bleed: 5 mm. Including cropmarks.

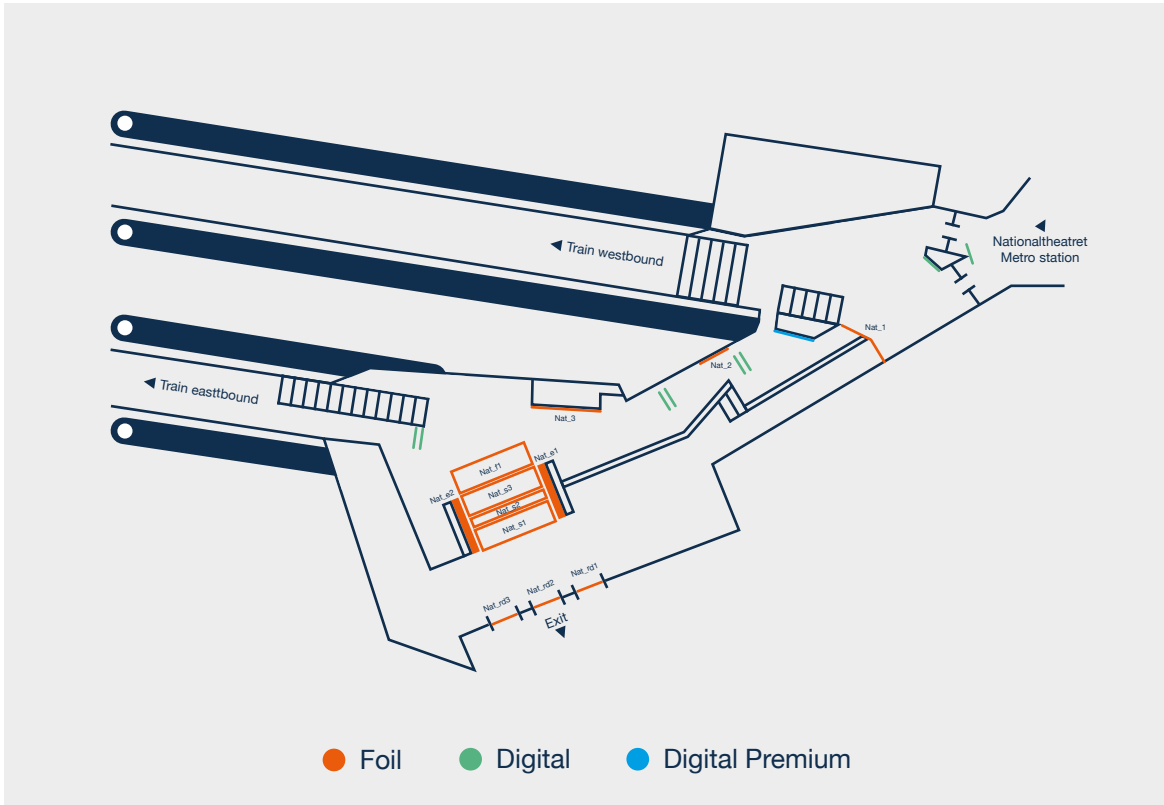
Layers marked "measures", "unsafe area" and "offcuts" should NOT be included in the print documents.

The documents will be printed on Polyester 210g / PVC free foil.

Group documents (reference)

Export high resolution PDF files from the group documents in addition to the print PDF files. These PDF files will be used for reference when fitting the foils, and should include the layers with unsafe areas and offcuts.

If the InDesign group documents causes any performance problems because of the linked InDesign documents, you can replace the linked documents with exported PDF files or images.



Billboard formats

Nat_1: 11800 x 3100 mm
 Nat_2: 3000 x 5000 mm
 Nat_3: 12200 x 3000 mm

Floor format

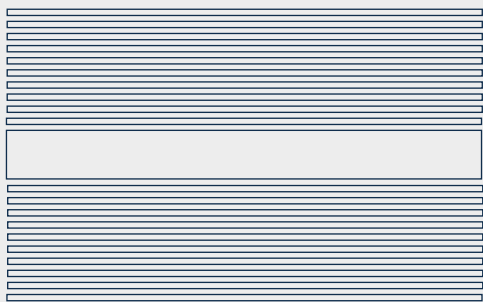
Nat_f1: 12320 x 4700 mm

Escalator formats

Nat_e1: see InDesign file
 Nat_e2: see InDesign file

Stairs formats

Nat_s1: 12690 x 115 mm (10 units)
 Nat_s2: 12690 x 1600 mm
 Nat_s3: 12690 x 115 mm (10 units)



Viewing angle

Revolving door 1 formats

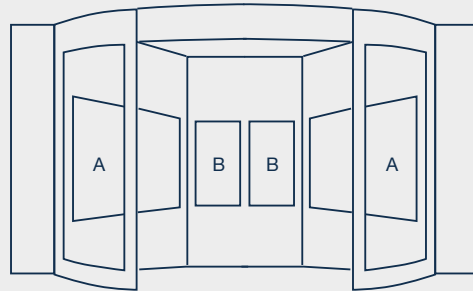
Nat_rd1_A: 1120 x 670 mm (x6)
 Nat_rd1_B: 560 x 670 mm (x6)

Revolving door 2 formats

Nat_rd2_A: 1120 x 670 mm (x6)
 Nat_rd2_B: 560 x 670 mm mm (x6)

Revolving door 3 formats

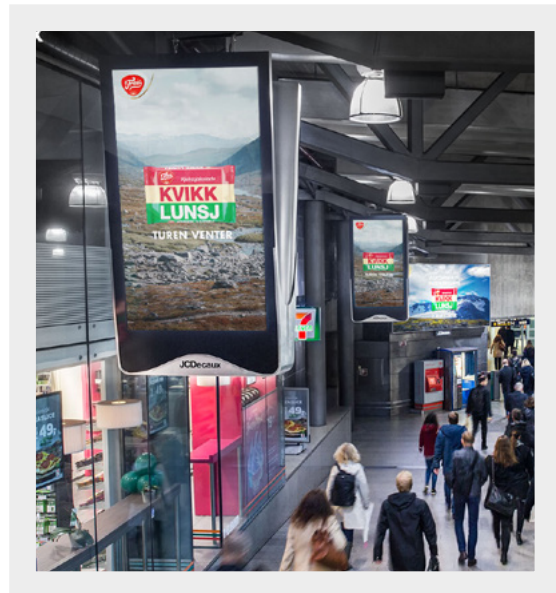
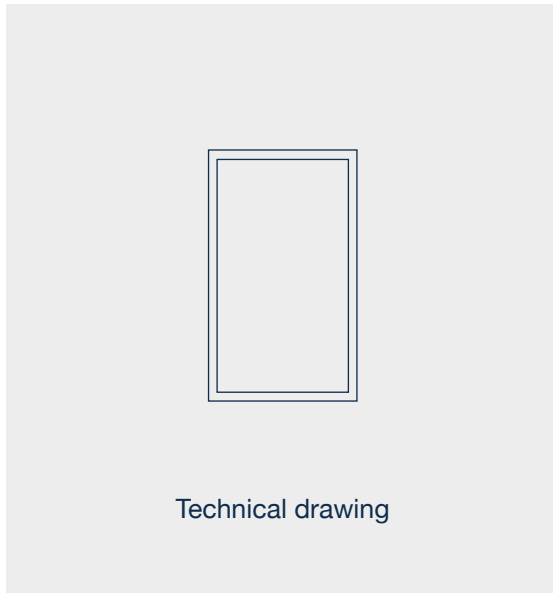
Nat_rd3_A: 1120 x 670 mm (x6)
 Nat_rd3_B: 560 x 670 mm (x6)



Nationaltheatret

Digital

- standard digital format



Format

1080 x 1920 px

Visible area

Same as format

Settings

Exported as MP4 (with H264 encoding) or JPG

Resolution: 72 ppi

RGB color code

Frame rate: 25 fps

Bit rate: **max 8 mbit/sec**

Delivery

Send files to: digitalt@jcdecaux.com

Delivery notes

Files must be named

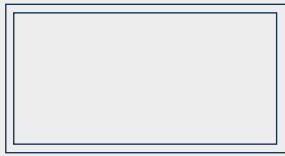
[ADVERTISER_YEAR_WEEK_PRODUCT_SEE BELOW](#)

* E.g: [Elkj p_Coffee_2024_w36_escalator_impact_digital_single_A](#)

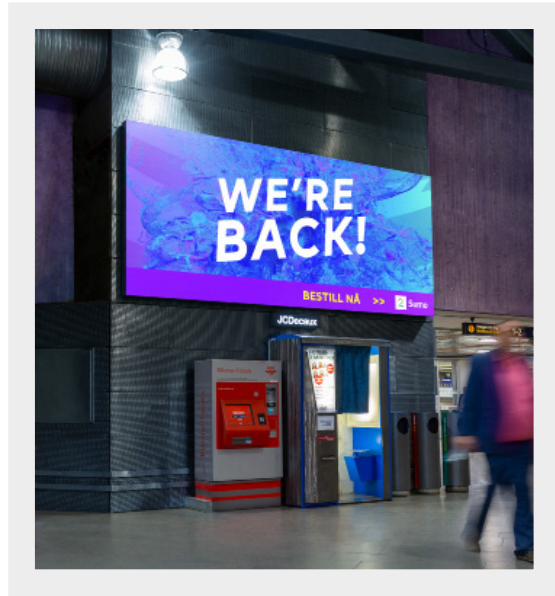
Nationaltheatret

Digital Premium

- large digital format



Technical drawing



Format

1728 x 768 px

Visible area

Same as format

Settings

Exported as MP4 (with H264 encoding) or JPG

Resolution: 72 ppi

RGB color code

Frame rate: 25 fps

Bit rate: Max 8 mbit/sec

Delivery

Send files to: digitalt@jcdecaux.com

Delivery notes

Files must be named

[RAIL_STATION_ADVERTISER_YEAR_WEEK_PRODUCT](#)

E.g: Nationaltheatret_Elkjøp_Coffee_2024_w36_digital_premium