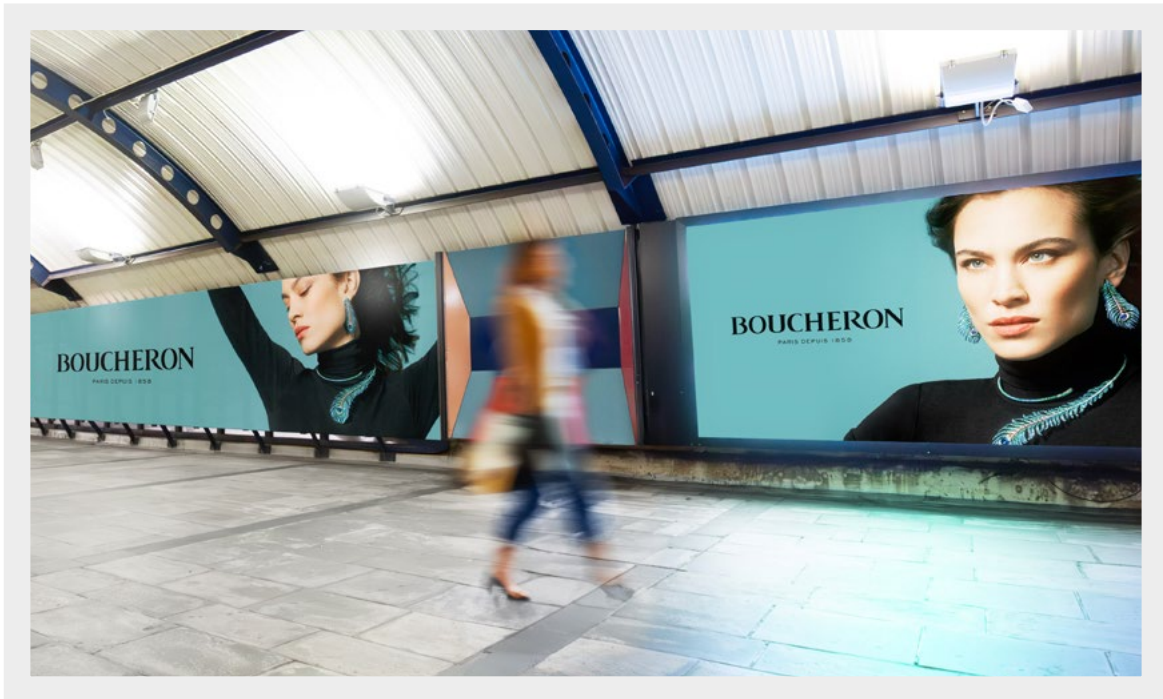
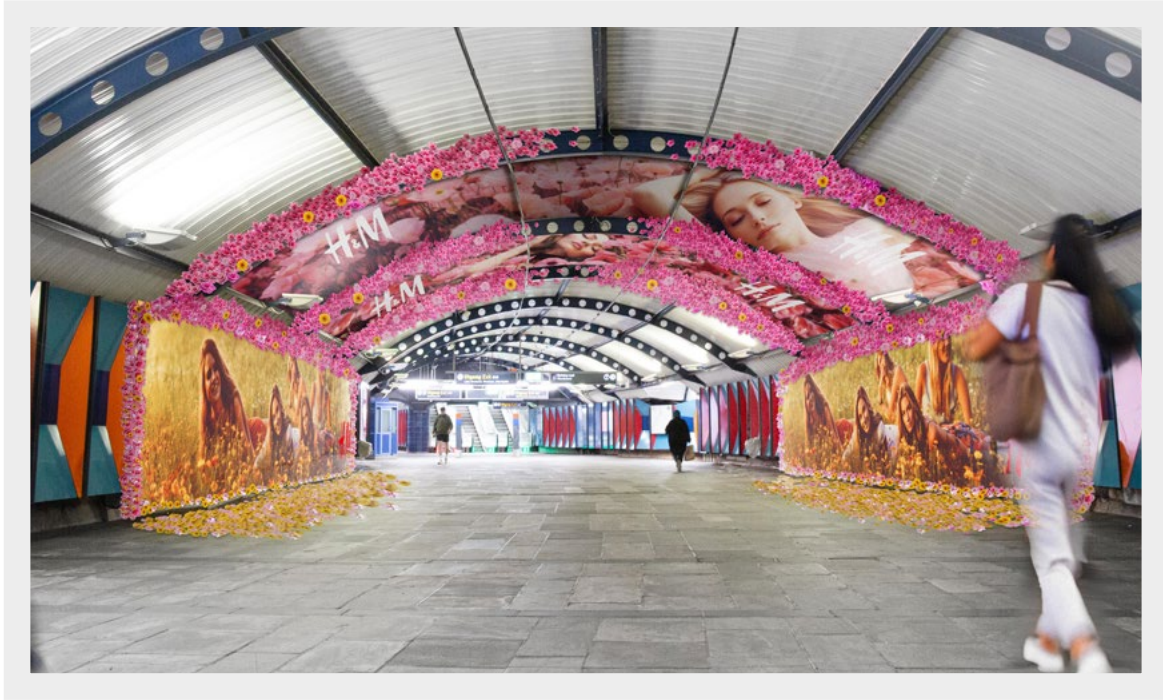
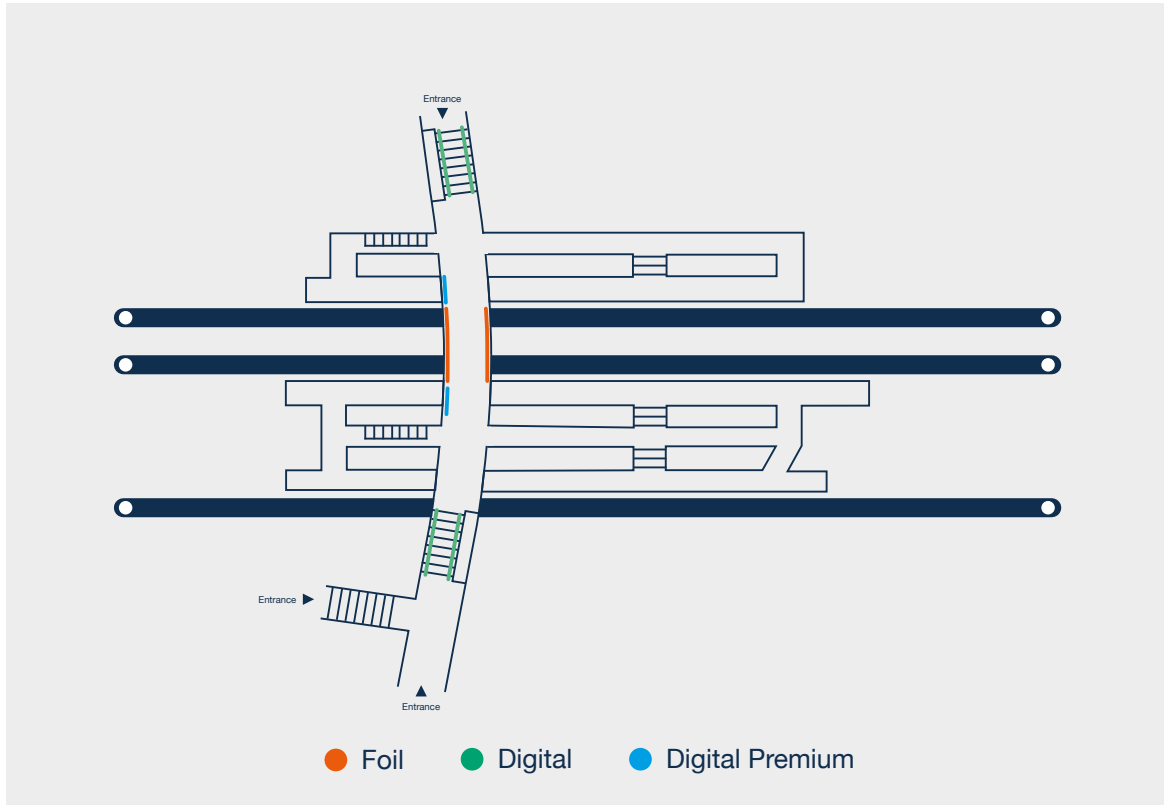


Stortinget

Station Domination

- digital and static formats





Format

Billboard Left: 13478 x 2188 mm

Billboard Right: 13478 x 2188 mm

Visible area

13378 x 2088mm

Material

Polyester fabric.

Settings

Document is preferably made in 1:10 or 1:2 (adjust DPI accordingly)

Effective DPI: 150 or higher

CMYK color code

5 mm bleed

Fonts must be vectorized (saved as text contours)

Material deadline

At least 9 working days before the campaign commences.

Send files to: motiv@jcdecaux.com

Delivery notes

The high-resolution PDF must be named

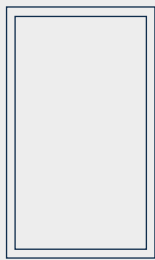
METRO STATION_ADVERTISER_YEAR_WEEK_FORMAT

E.g: Stortinget_Elkjøp_Coffee_2024_w36_13478x2188

Stortinget

Digital

- escalator panels



Technical drawing



Format

1080 x 1920 px

Visible area

Same as format

Settings

Exported as MP4 (with H264 encoding) or JPG

Resolution: 72 ppi

RGB color code

Frame rate: 25 fps

Bit rate: **max 8 mbit/sec**

Material deadline

At least 4 working days before the campaign commences.

Send files to: digitalt@jcdecaux.com

Delivery notes

Files must be delivered rotated -90° counterclockwise and named

[ADVERTISER_YEAR_WEEK_PRODUCT_SEE BELOW](#)

* If only single creative: SINGLE (if more than one single creative SINGLE_A, SINGLE_B and so on)

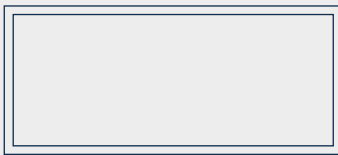
* Groups of 4: 4_1, 4_2, 4_3, 4_4 (from left to right)

* E.g: Elkjøp_Coffee_2024_w36_digital_single_A

Stortinget

Digital Premium

- large digital format



Technical drawing



Format

1920 x 1080 px

Visible area

Same as format

Settings

Exported as MP4 (with H264 encoding) or JPG

Resolution: 72 ppi

RGB color code

Frame rate: 25 fps

Bit rate: **max 8 mbit/sec**

Material deadline

At least 4 working days before the campaign commences.

Send files to: digitalt@jcdecaux.com

Delivery notes

Files must be named

METRO STATION_ADVERTISER_YEAR_WEEK_PRODUCT

E.g: Stortinget_Elkjøp_Coffee_2024_w36_digital_premium