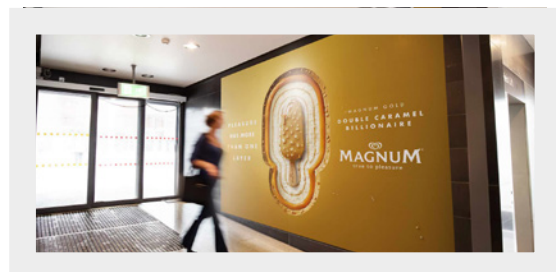
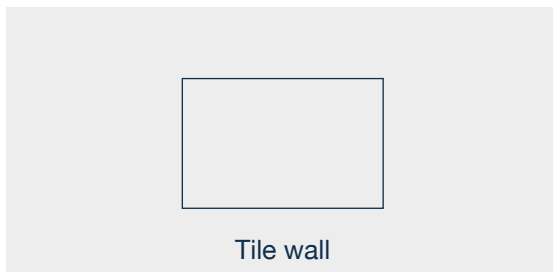
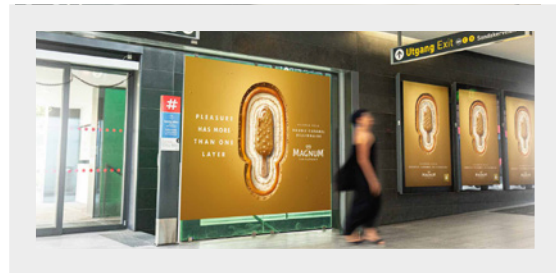
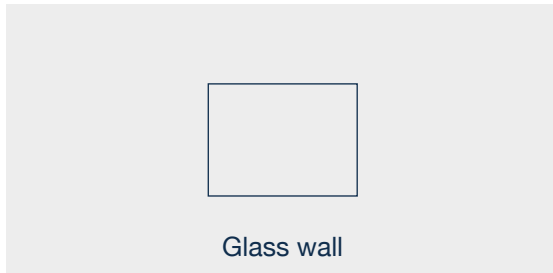


Nydalen

Impact

- exit Sandakerveien



Format

Glass wall: 2480 x 2070 mm

Tile wall: 4500 x 2700 mm

Visible area

Same as format

Material

Foil

Settings

Document is preferably made in 1:1 or 1:2 (adjust DPI accordingly)

Effective DPI: 150 or higher

CMYK color code

5 mm bleed

Fonts must be vectorized (saved as text contours)

Material deadline

At least 9 working days before the campaign commences.

Send files to: motiv@jcdecaux.com

Delivery notes

The high-resolution PDF must be named

METRO STATION_ADVERTISER_YEAR_WEEK_FORMAT

E.g: Nydalen_Elkjøp_Coffee_2024_w36_2480x2070