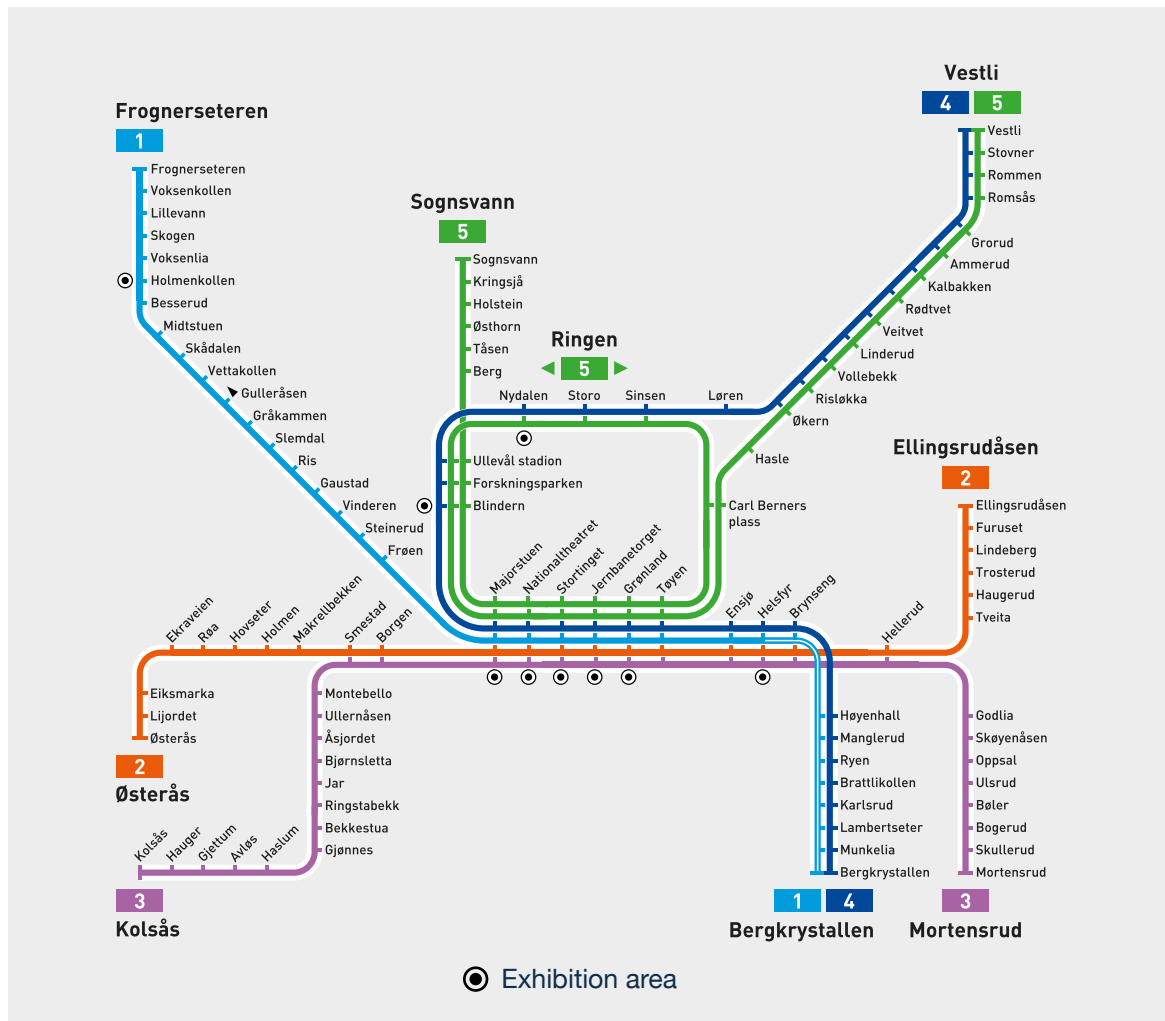


Metro

Exhibition areas

- engage the audience



Electricity

On some stations - contact your sales representative to address which one

Parking

Yes, but requires payment

Toilet

On some stations (but requires payment) - contact your sales representative to address which one

Filming / Photo

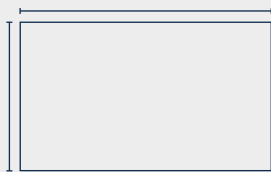
Yes, but needs approval

Area size

Preferable size is 3x2 or 4x2 meters.

1

Holmenkollen



Technical drawing

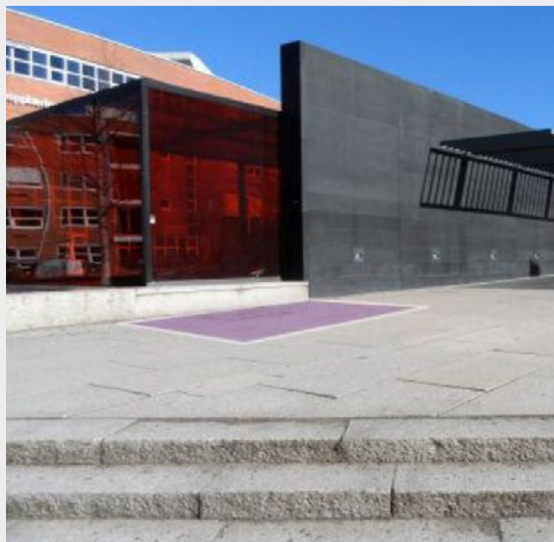


2

Nydalen



Technical drawing



3

Blindern

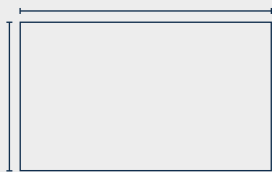


Technical drawing



4

Majorstuen



Technical drawing

Westbound

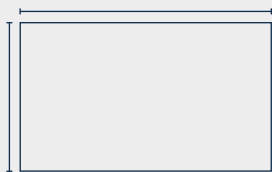


Eastbound



5

Nationaltheatret



Technical drawing



6

Stortinget

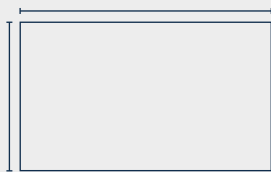


Technical drawing



7

Jernbanetorget

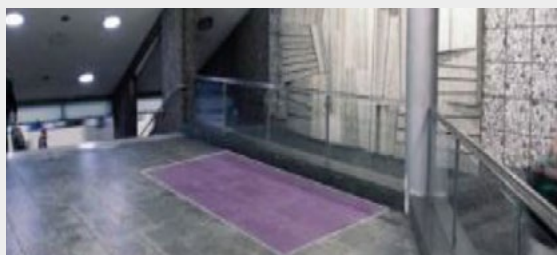


Technical drawing

Westbound

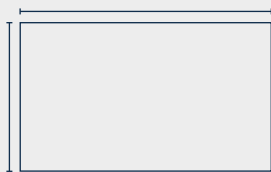


Eastbound



8

Grønland



Technical drawing

Westbound

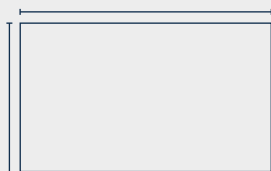


Eastbound



9

Helsfyr



Technical drawing

